

# State of Wyoming Corner Record

(In compliance with the **CORNER PERPETUATION AND FILING ACT**, Wyoming Statutes, 1997 Section 33-29-140 et. seq., and the Rules and Regulations of the Board of Professional Engineers and Professional Land Surveyors)

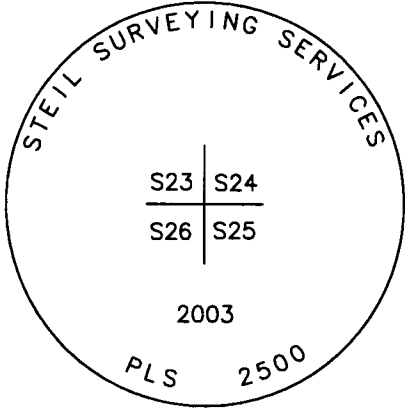
Reverse side of this form may be used if more space is needed.

ORIGINAL RECORD: "SET A WHITE SANDSTONE 20X12X9 INS. FOR COR. TO SECTIONS 23, 24, 25, AND 26."

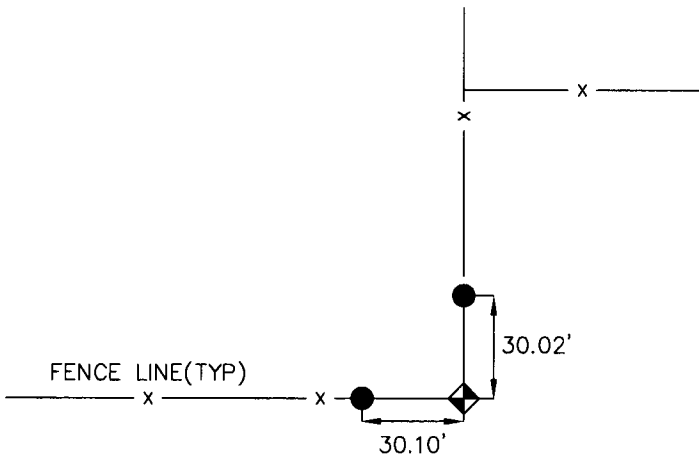
FOUND: 3" ALUMINUM CAP STAMPED "PLS 2500 2003" AT FENCE CORNER.

SET: TWO (2) REFERENCE MONUMENTS: 30" LONG NO. 5 REBAR WITH 2" ALUMINUM CAP STAMPED "LWS PLS 9387" IN FENCE LINE.

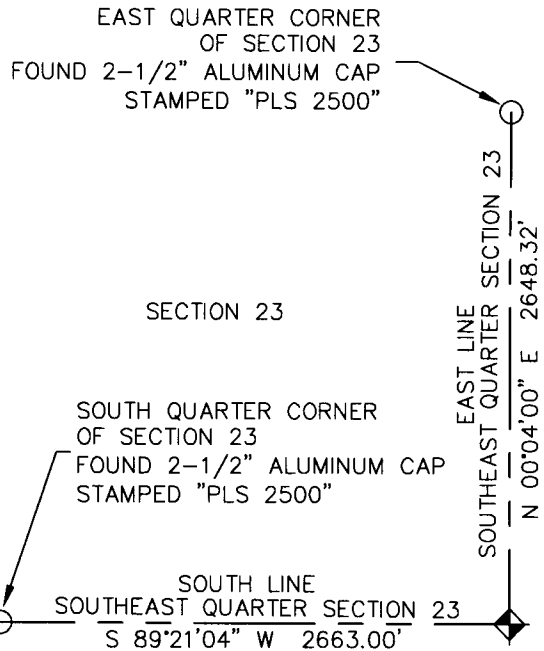
NOTE: BEARINGS AND DISTANCES HEREON ARE BASED ON UTM ZONE 13F - NAD83/NAVD88 AND ARE SHOWN AT GRID. IN ORDER TO OBTAIN GROUND DISTANCES USE A COMBINED SCALE FACTOR OF 1.0006282796.



**Monument Inscription**



**Reference Monument Location**



- = SET 30" LONG NO. 5 REBAR WITH 2" ALUMINUM CAP STAMPED "LWS PLS 9387"
- ◆ = SOUTHEAST CORNER OF SECTION 23 FOUND 3" ALUMINUM CAP STAMPED "PLS 2500 2003"

**Monument Location**

Date of Field Work: 05/31/2012

Office Reference: Project #50612

## Cross Index Plat

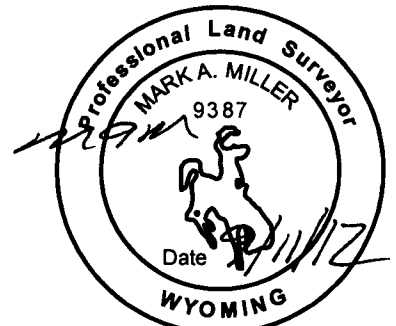
	1	2	3	4	5	6	7	8	9	10	11	12	13	14	15	16	17	18	19	20	21	22	23	24	25		
A																											A
B																											B
C		6			5				4					3					2						1		C
D																											D
E																											E
F																											F
G																											G
H																											H
J																											J
K																											K
L																											L
M																											M
N																											N
O																											O
P																											P
Q																											Q
R																											R
S																											S
T																											T
U																											U
V																											V
W																											W
X																											X
Y																											Y
Z																											Z
	1	2	3	4	5	6	7	8	9	10	11	12	13	14	15	16	17	18	19	20	21	22	23	24	25		

Firm/Agency, Address

Mark Miller, PLS 9387  
 LW Survey Co.  
 12345 W. Alameda Parkway  
 Suite 205  
 Lakewood, CO 80228  
 Telephone Number: (303) 658-0358

This corner record was prepared by me or under my direction and supervision.

**SEAL & SIGNATURE**



RECORDED 9/25/2012 AT 11:57 AM REC# 599593 BK# 2296 PG# 881  
 DEBRA K. LATHROP, CLERK OF LARAMIE COUNTY, WY PAGE 1 OF 1

Corner Name Southeast Corner Section 23, T 13 N, R 63 W, 6th P.M.  
 County: Laramie Wyoming

Cross-Index No.: R-21

SBRPEPLS/PLSW: March 1994; PLSW January 1998